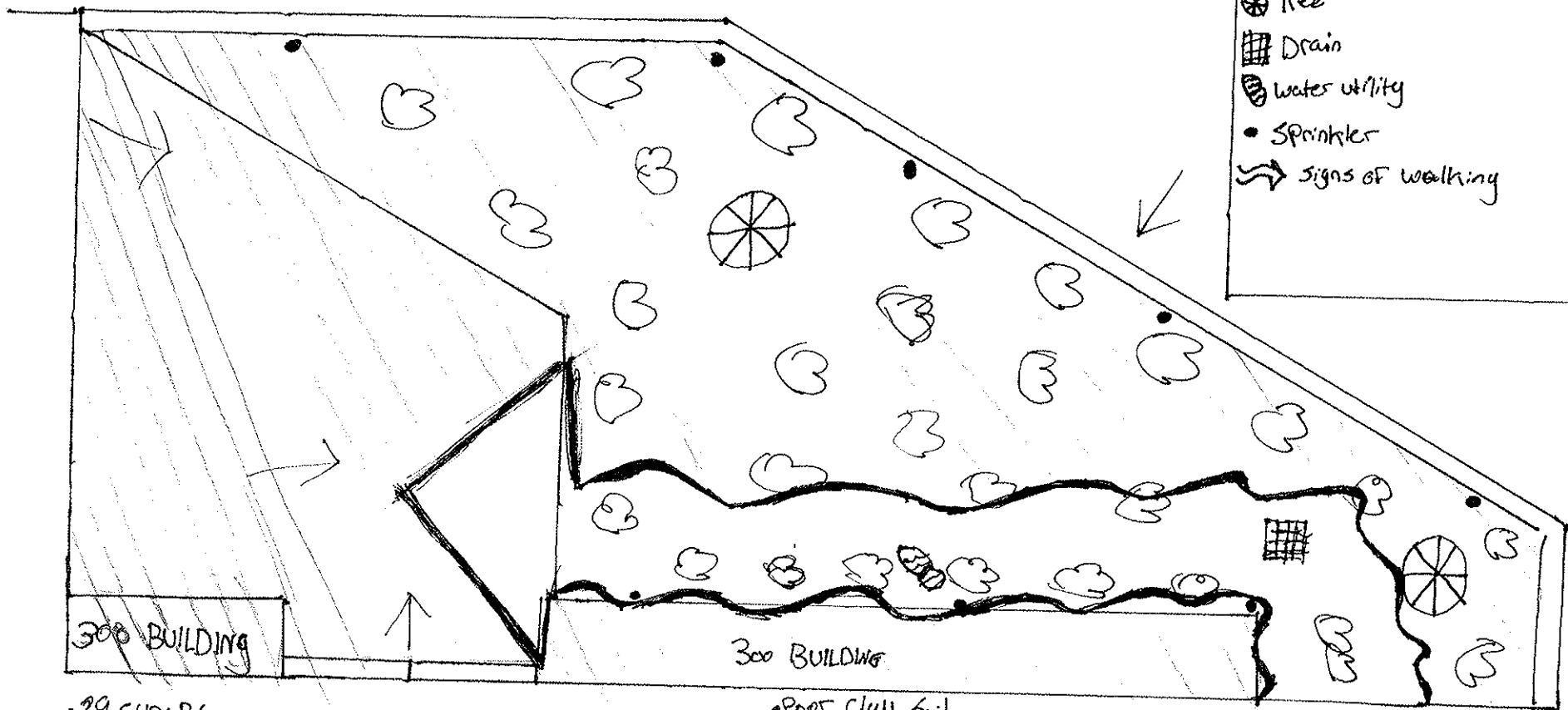


RELAXATION

IS

NOT

THE INVENTOR / FANUC



- Views into side
- ♡ shrub
- ⊗ Tree
- ⊠ Drain
- ⊙ water utility
- Sprinkler
- ⇒ signs of walking

- 29 SHRUBS
- Site condition: Poor to moderate
- Walked through often, Trampled shrubs

Utilities

Water - 2 ft wide 3 ft 11" long

- Poor clay soil
- level ground
- Shade to partial sun

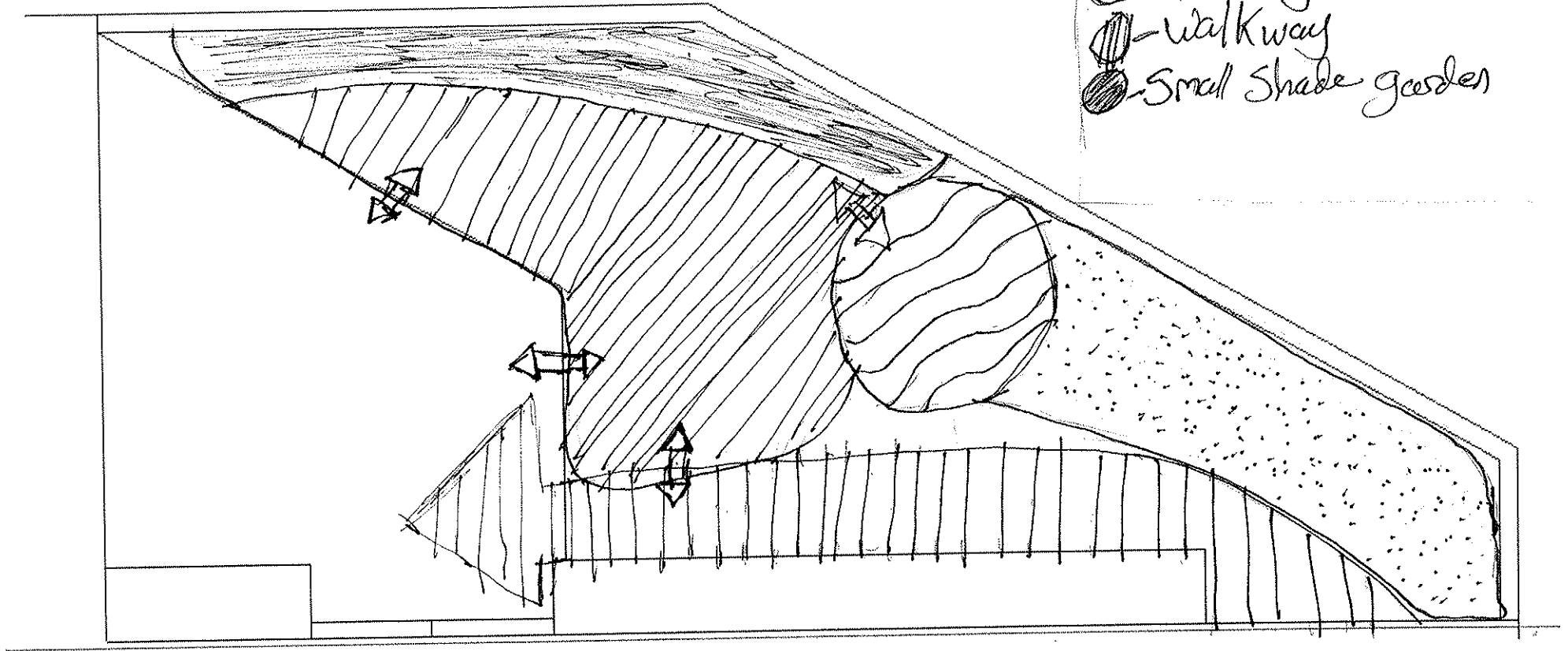
Views

- looking down from wall
- From walkway and exiting building.

RELAXATION IS KEY

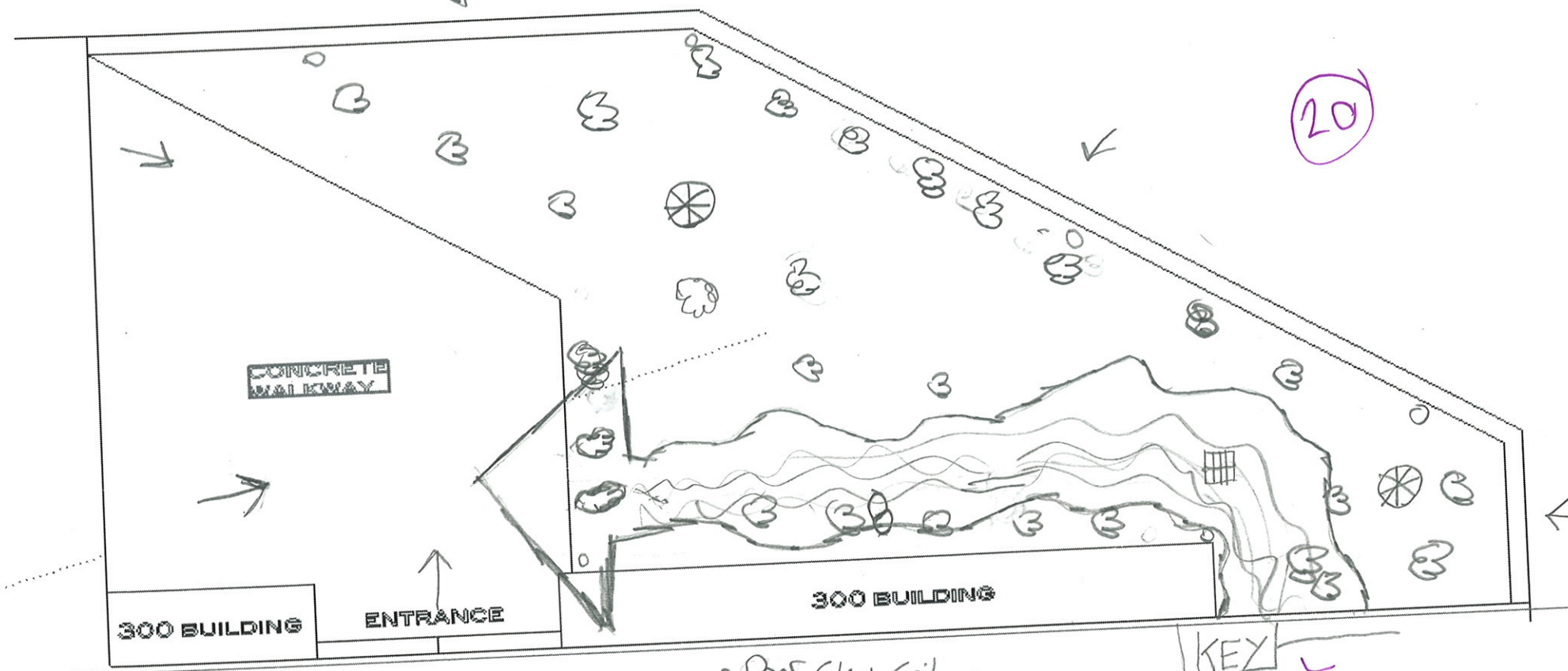
Zoo BUILDING PROJECT

- - lounge/seating area
- - water fountain
- - formal garden
- - walkway
- - small shade garden



300 building Side/Entrance garden

Jarred Crossley



Notes

- 29 shrubs
- Site condition is poor to moderate,
- Walked through often, shrubs trampled

Utilities

Water - 28" wide 3 ft 11" long

- Poor Clay Soil
- Views

Looking down from wall-side-fence

- Shaded, partial sun
- level ground

KEY

▢ - Drain

⊗ - Tree

→ - Signs of walking

→ - View

⊗ - water utility

⊗ - shrub

○ - sprinkles



	Pro	Con
Seating Area	A Place to Relax with nice setting	Trash in garden
Shade garden	Shade for sitting Area	Break branches/ Plants need to be shock tolerant
Water Feature	Cool area looks	Hazard to fall in, To could get in. Maintenance
Border Plants	Define edge of walkway	Could get trampled
ART	looks	Could get ruined/ stolen
Colorful garden	Draws Attention. looks, color	
Walkway		

Item	Pro's	Con's
Walkway	A way around Zoo building save time	Might get crowded and people leave path
Fountain	looks, cool Area	Hazard
Seating/Lounge Area	A Place to Sit/Eat/Hangout	Ditch class. Trash
Small Paths	keeps from walking on plants	
Formal garden	looks, Accents Fountain	
Colorful Borders	looks, shows Edge.	could be trampled

